

ACCORDION OPTIONS SPECIFICATIONS

Electric Accordion Doors

Maximum Single Door

Opening Width: 40'10" [12.45m]

Stack Size: Add 5" [127] per door to stack sizes.
(For door stack dimensions, see individual model specification pages.)

The electric option is available for all Accordion Models. See individual specification sheets for partition information.

1.06 WARRANTY

- A. The electric track system shall be guaranteed against defects in materials and workmanship for a period of one year from date of installation and acceptance for beneficial use.

PART 2 - PRODUCTS

2.01 ACCEPTABLE MANUFACTURERS

- A. Upon compliance with all of the criteria specified in this section, Manufacturers wishing to bid products similar to the product specified must submit to the architect 10 days prior to bidding complete data in support of compliance and a list of three past installations of products similar to those listed. The submitting manufacturer guarantees the proposed substituted product complies with the product specified and as detailed on the drawings.

2.02 MATERIALS

- A. Product to be top supported, electrically operated Series (add model number) _____ accordion partition as manufactured by Hufcor Inc.

B. Suspension system

1. Track shall be of clear anodized architectural grade extruded aluminum alloy 6063-T6. Track design shall provide integral support for adjoining ceiling, soffit, or plenum sound barrier. Guide rails shall not be required. Track shall be connected to the structural support by min. 3/8" [10] dia. threaded steel hanger rods.
2. Partition shall be supported by a nylon-tired steel ball bearing carrier at the lead post. The lead post provides a positive vertical seal between the partition and the jamb.
3. Intermediate carriers shall be of nylon-tired steel ball bearings spaced 18" [457] on center.
4. Factory assembled power unit shall include motor,

torque limiter and brake, two key control stations wired in series, emergency release, and all necessary equipment for electric operation. Roller chain drive shall attach to the carrier of the lead panel. Limit switches shall be provided to prevent over-travel. Motor shall be 60 Hz., and 115 volt, with adequate horsepower to operate partition effectively.

- a. Electrical wiring, power supply, and electrical connection shall be provided by the electrical contractor.

5. Adjustable wall jambs to be of clear anodized aluminum 6063-T6 alloy.

2.03 OPERATION

- A. Partition shall be key switch controlled, requiring constant pressure to activate the motor. Switches to be mounted to provide operators a clear view of the partition path.
- B. Motor drive shall automatically seal the partition in the opening.
- C. Stack/Store Panels
1. Partitions are moved to the stack area by turning the key-switch controls.

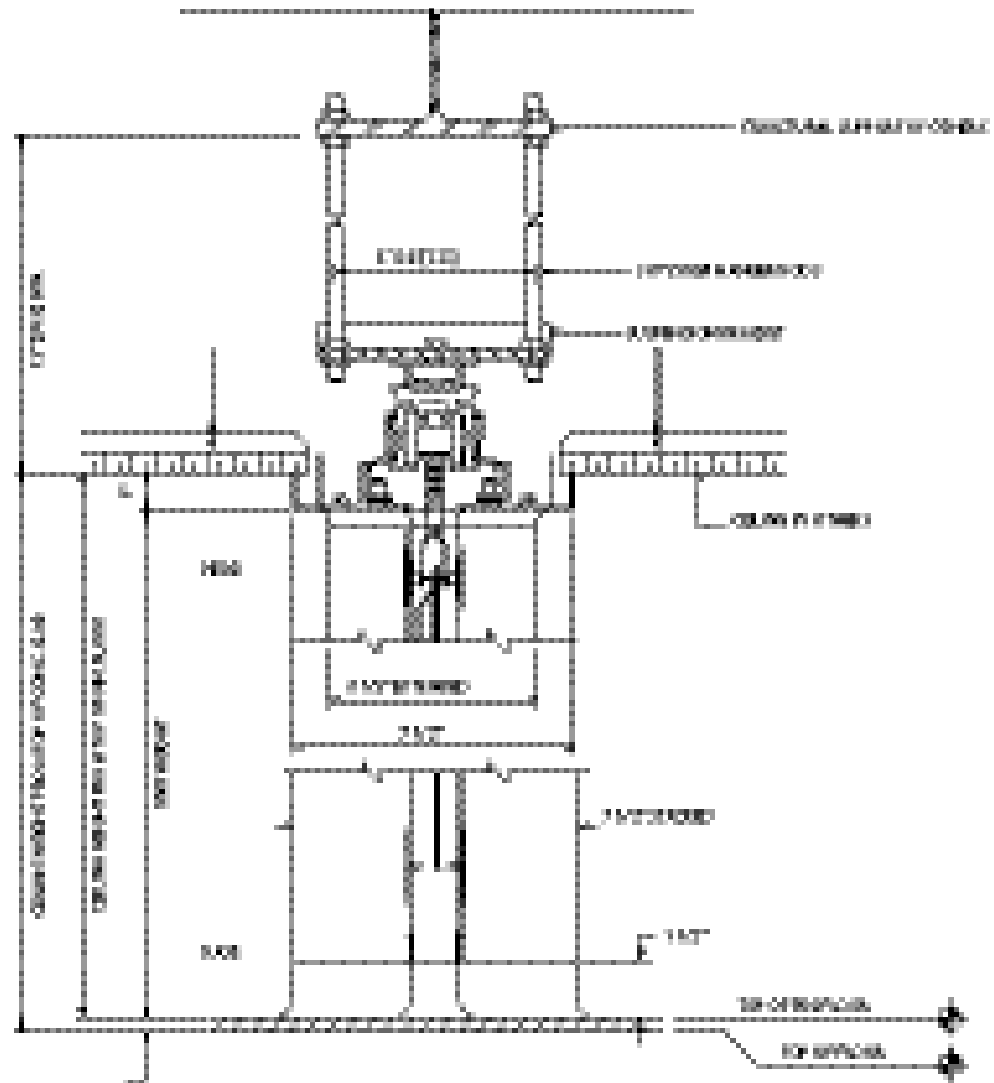


Electric Accordion Option

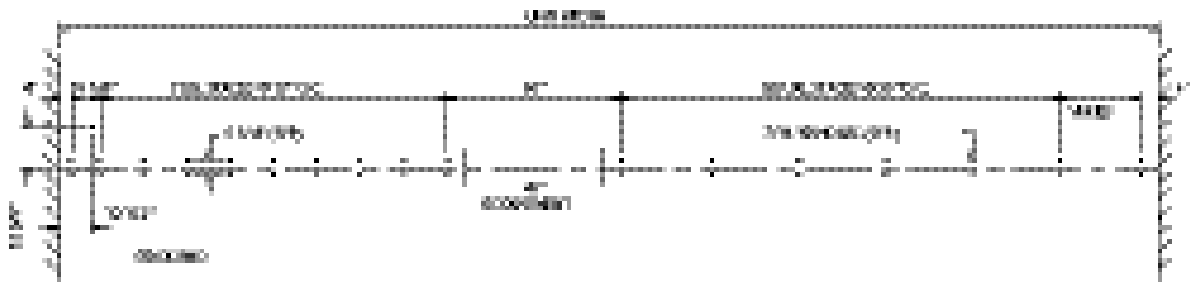
VERTICAL SECTION

Series 3100E-4500E Shown

(Series 1500 has no sweep strips and Series 2000 has Sweepstrips Top & Bottom One Side only.)



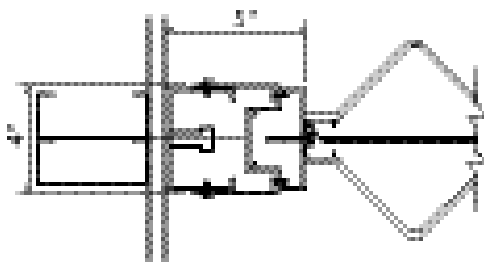
HANGER ROD LAYOUT - Single Door



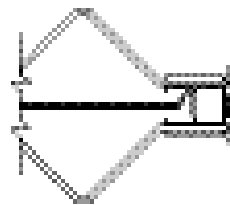
No Scale

HORIZONTAL SECTIONS

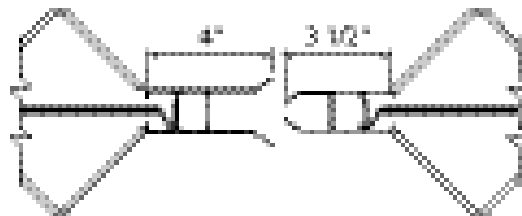
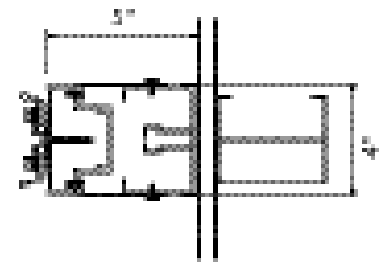
Series 3100E-4500E



Anchor Post

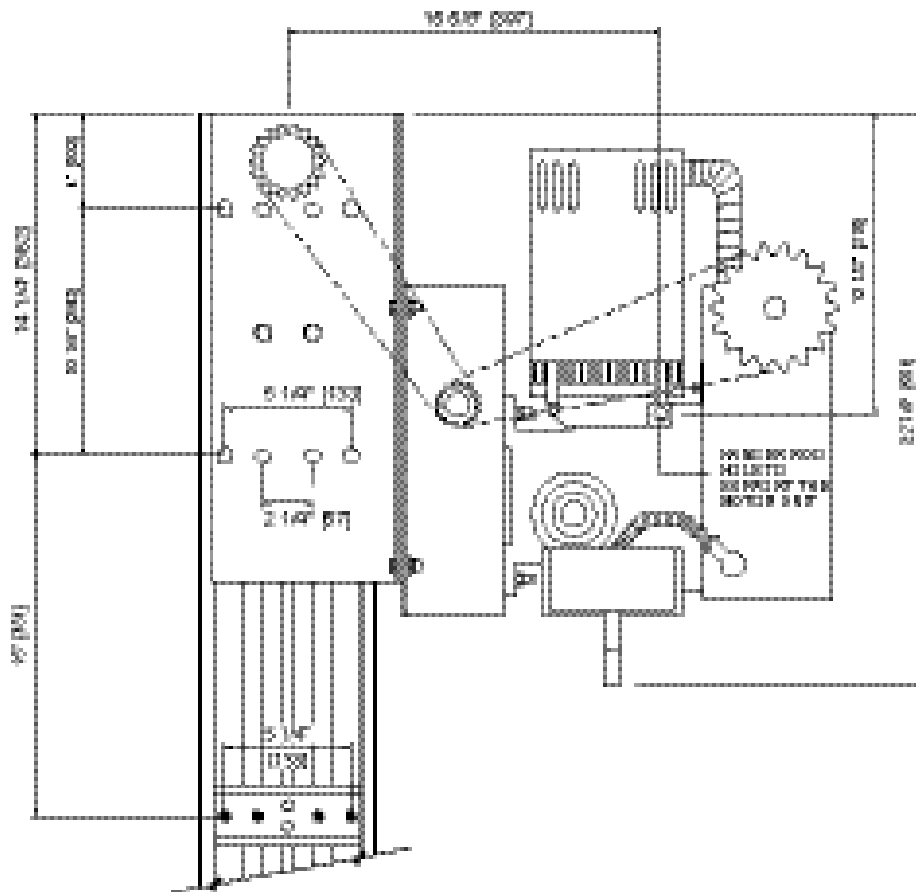


Lead Post & Jamb Molding

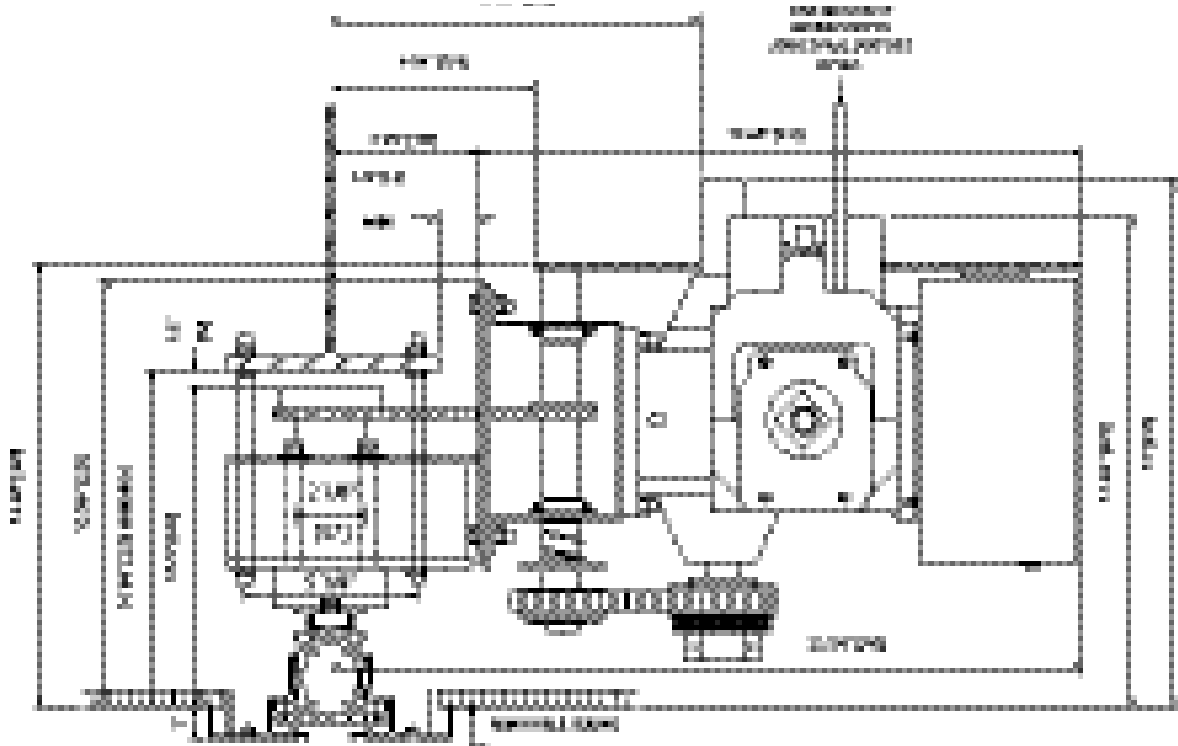


Pairs Meeting

Top View of Motor



End View of Motor



Worldwide hea

Hufcor Inc.
 P.O. Box 591
 Janesville, WI USA 53547
 1-800-542-2371 ext. 395; 1-608-756-1241
 FAX: 1-608-758-8253
 E-mail: info@hufcor.com
 Internet address: <http://www.hufcor.com>

The manufacturer reserves the right to improve and change product without notice.

Select Hufcor products are also manufactured in the U.S. at:
 Hufcor/Airwall, Inc., 8739 E. Artesia Blvd., Bellflower, CA 90707
 1-562-634-3116 FAX 1-562-630-8203