

VINYL COLOR SELECTOR



OPERABLE



ACCORDION



PORTABLE

PARTITIONS

The vinyl patterns and colors shown in this selector are included in the price of Hufcor operable, accordion, and portable partitions which are manufactured in the United States.

HUFCOR[®] VINYL PATTERNS

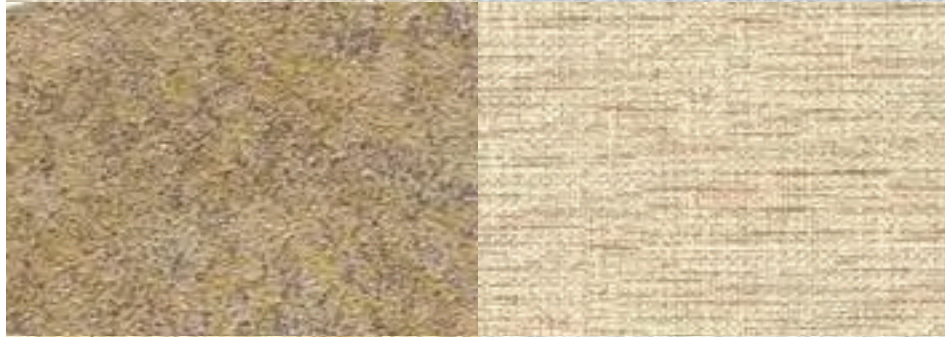
for Operable, Accordion & Portable Partitions

HIGHLAND
236
Beach



CAIRN
246
Stone

STONEART
518
Cavern



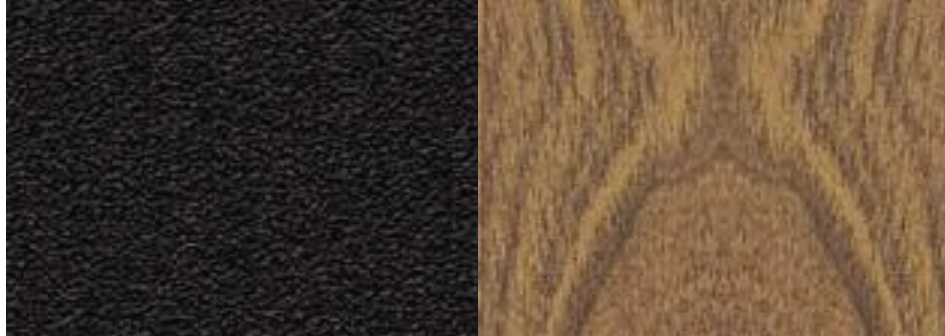
ASIAN LINEN
505
Parchment

REYNOLDS[®]
511
Candle



MIKADO
257
Ecru

STARDUST
516
Licorice



WOODTONE
199
Cherry Oak

GREENGUARD INDOOR AIR QUALITY CERTIFIED[®]

Our vinyl wallcoverings (with the exception of Woodtone and Stardust patterns) are GREENGUARD Indoor Air Quality Certified[®] which means these wallcoverings have passed a series of rigorous emissions tests and are certified by the GREENGUARD Environmental Institute as being low emitting and having a minimal impact on indoor air quality. The GREENGUARD Environmental Institute is an independent non-profit organization that oversees the GREENGUARD Certification Program, including the establishment of acceptable standards for indoor products and protocols.

Actual color provided may vary from swatch shown due to dye lot variations. Room lighting may also change the color's appearance. Effort has been made to accurately represent the vinyl colors, yet colors on your monitor may not accurately represent the swatch due to variation in monitor calibration. *Reynolds is a trademark of RJF International Corporation.

HIGHLAND PATTERN

Recommended for use on a tackable surface. The embossed surface helps to conceal pin holes. Pattern is a random match.



231
White Rice

201
Off White

274
Dover (H)

236
Beach

217
Flax

218
Coffee Cream



237
Cloud

225
Cement

227
Stone (H)

228
Gulf

REYNOLDS® PATTERN

NOT recommended for use on a tackable surface. Tack holes will become visible over time. Pattern is a random match. **REYNOLDS PATTERN NOT AVAILABLE FOR USE ON ACCORDION DOORS.**



510
Avalon

511
Candle

513
Inca

512
Cognac

515
Uptown

514
Titan

Actual color provided may vary from swatch shown due to dye lot variations. Room lighting may also change the color's appearance. Effort has been made to accurately represent the vinyl colors, yet colors on your monitor may not accurately represent the swatch due to variation in monitor calibration.

*Reynolds is a trademark of RJF International Corporation.

CAIRN PATTERN

NOT recommended for use on a tackable surface. Tack holes will become visible over time. Pattern is a random match.



239
Dover (C)

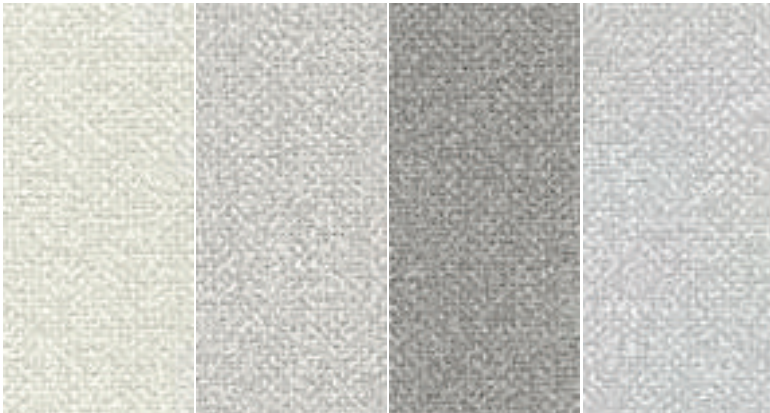
240
Creamsicle

241
Wheat

242
Beige

508
Sienna

507
Camouflage



244
Pearl

305
Grey

306
Grey Flannel

246
Stone (C)

ASIAN LINEN PATTERN

NOT recommended for use on a tackable surface. Tack holes will become visible over time. Pattern is a random match.



501
Alabaster

505
Parchment

502
Berber

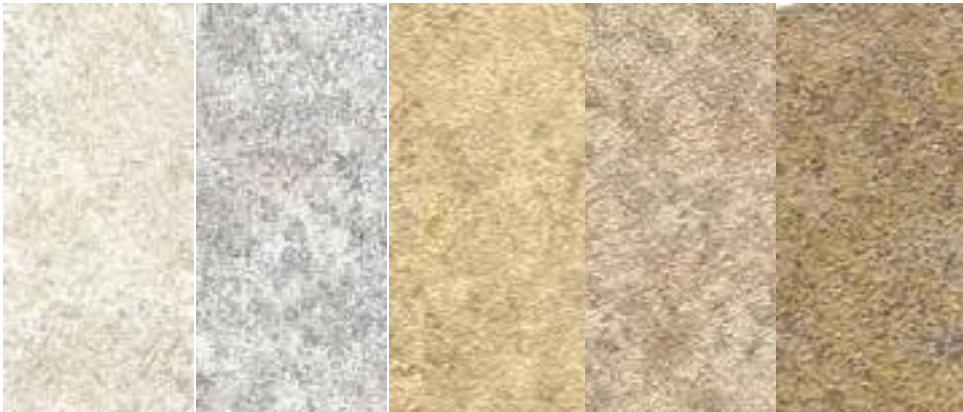
504
Hemp

506
Pistachio

503
Grey

STONEART PATTERN

NOT recommended for use on a tackable surface. Tack holes will become visible over time. Pattern is a random match.



269
Seashore

255
Provence

519
River Red

517
Campfire Wood

518
Cavern

MIKADO PATTERN

NOT recommended for use on a tackable surface. Tack holes will become visible over time. Pattern is a random match.



257
Ecrú

276
Ivory

277
Raffia

509
Pepper

278
Plum

WOODTONE



NOT recommended for use on a tackable surface. Tack holes will become visible over time.

199
Cherry Oak

STARDUST



NOT suitable as a tackable surface. Smooth surface will show pin holes.

516
Licorice

TYPE II, CLASS A, VINYL SPECIFICATIONS	PATTERNS		
	Highland Cairn/Stoneart Mikado/Asian Linen ¹	Stardust, Woodtone ¹	Reynolds ²
Minimum Weight	20 oz.	20 oz.	21 oz.
Average Width	to 54" [1372mm]	to 54" [1372mm]	to 54" [1372mm]
Cadmium Free	x	x	x
Mercury Free	x	x	x
Mildew Resistant	x	x	x
Underwriters Laboratories Labeled and Listed	x	x	x
CCFA-W-101	x	x	x
CCC-W-408A & C	x	x	x
MEA Approved N.Y. Dept of Buildings	x	x	x
NFPA 101-94 When Tested by ASTM E84-91	x	x	x
GREENGUARD ³ Indoor Air Quality Certified for Low VOC Emissions	x	N/A	x
Random Match Pattern	x	Stardust, Yes Woodtone, No	x

 Asian Linen is backed with RECORE™ – a 100% recycled polyester featuring 30% recycled content including 20% post-consumer waste.

Wall coverings contain additives to resist mold and other micro-biological growth on the decorative wallcovering surface. These additives, however, will not prevent mold growth if moisture is allowed to accumulate in or behind the wall.

¹ Trademark of OMNOVA Solutions Inc. ² Trademark of RJF International Corporation

³ GREENGUARD Indoor Air Quality Certified is a registered certification mark of the GREENGUARD Environmental Institute

WALLCOVERING RECLAMATION PROGRAM

To reduce the amount of material being disposed in landfills, our vinyl suppliers offer a vinyl reclamation program. To be eligible, you must order new wallcovering from the patterns in this selector. Existing wall covering must be fabric-backed vinyl with no signs of visible mold or other contaminants. Contact your Hufcor Distributor for more information.

CLEANING INSTRUCTIONS

These instructions serve as a guide to normal cleaning maintenance.

Always use the mildest cleaning method first before using chemical cleaners. Stains should be removed as quickly as possible. This is especially important for materials containing colors or solvents such as ballpoint ink, lipstick, oil and some foodstuffs. If soilants remain on the wallcovering too long permanent discoloration may develop.

Day-to-Day Soil – Ordinary dirt can be removed with a mild soap, warm water, and if necessary, a hard bristle brush to remove dirt from the crevices of deeply textured patterns. Rinse thoroughly with clean water.

Dry vinyl with a soft, white, lint-free cloth or towel. Dry with a blotting action rather than a rubbing motion.

DO NOT use active solvent type cleaning preparations such as nail polish remover, tar and bug remover, etc. because they remove print, and/or finish from the wallcovering.

For tougher stains, try using rubbing alcohol, hydrogen peroxide, turpentine, household bleach or kerosene. First test the solution on an inconspicuous portion of the vinyl to be sure there will not be any adverse effect on print, color or gloss.

NEVER MIX CLEANING AGENTS TOGETHER – VIOLENT REACTIONS MAY OCCUR.

Vinyl wallcoverings should not be sprayed with wax or other protective coating. Such application would only tend to discolor the material and offer little protection.

Additional technical information may be found on our website, www.hufcor.com.

Hufcor has a program of continuous product improvement and as a result reserves the right to improve and change products, design, and/or specifications without notice.



The quality systems of Hufcor's manufacturing facilities are registered to the ISO 9001 standards.

F-4200B 2/10 PDFMTH



P.O. Box 591 • 2101 Kennedy Rd. • Janesville, WI USA 53547-0591

Tel: 608-756-1241 or 800-356-6968 • Fax: 608-758-8253

Email: info@hufcor.com

www.hufcor.com



*USGBC and related logo is a trademark owned by the U.S. Green Building Council and is used by permission.