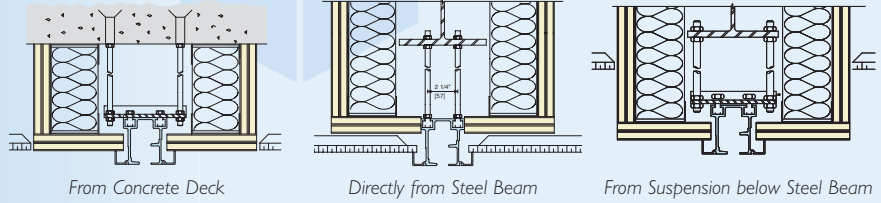


Track Systems

A QUALITY TRACK SYSTEM ASSURES YOUR PARTITIONS WILL MOVE EASILY FOR YEARS TO COME AND ENHANCE FAST PANEL SET-UP AND TAKE-DOWN.

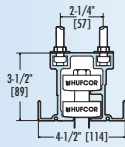
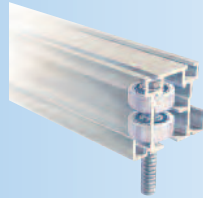
All Hufcor tracks are rigorously tested for a minimum of 100 miles (approx. 10 years) of use. Job requirements vary, which is why Hufcor offers a selection of tracks to meet your needs. Our patented designs are the most imitated in the industry.

SOME TYPICAL SUSPENSIONS:

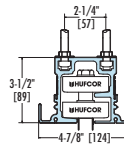


ALUMINUM TRACK SYSTEMS

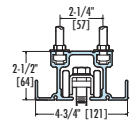
Our aluminum tracks are of clear anodized extruded architectural grade 6063-T6 alloy. Among aluminum's benefits are quiet operation, consistent shape for end-to-end alignment, unitized design for incorporating header panels and alignment pins, corrosion resistance, and we anodize it for a smooth, hard running surface needed for proper carrier movement. A selection of tracks is available to accommodate the weight of the model selected. The tracks have been load tested a minimum of 100 miles [161] (approximately 10 years of use).



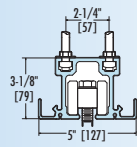
**TYPE 26
OMNI-DIRECTIONAL**
Weights to 500 Lbs. per panel



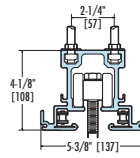
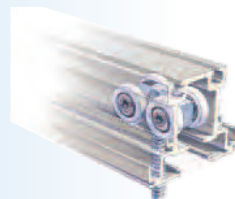
**TYPE 36
OMNI-DIRECTIONAL**
Weights to 1000 Lbs. per panel



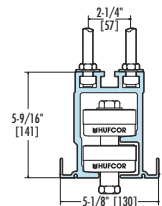
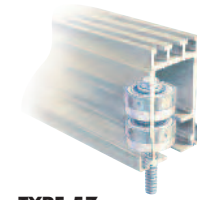
**TYPE 38
PAIRS & MANUAL TRAINS**
Weights to 400 Lbs. per panel



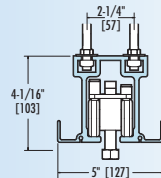
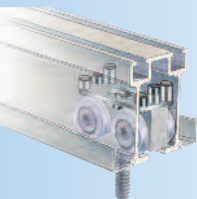
**TYPE 40
PAIRS & MANUAL TRAINS**
Weights to 900 Lbs. per panel



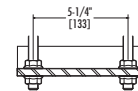
**TYPE 42E
ELECTRIC TRAINS**
Weights to 900 Lbs. per panel



**TYPE 57
OMNI-DIRECTIONAL**
Weights to 1500 Lbs. per panel



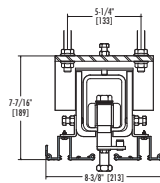
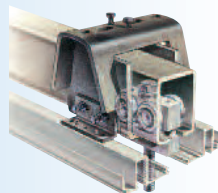
**TYPE 28
CURVE & DIVERT TRACK FOR
INDIVIDUAL PANELS**
Weights to 1200 Lbs. per panel



OPTIONAL SUSPENSION BRACKET
Optional suspension bracket for 5-1/4" [133] spacing. Available on all aluminum tracks.

STEEL TRACK SYSTEMS

Hufcor Steel Track is used when the partition height or weight limit exceeds that recommended for the aluminum system.



**TYPE 11
OMNI-DIRECTIONAL, ELECTRICAL
& PAIRED PANELS**
Weights to 3000 Lbs. per panel

Note: Metric dimensions are in []