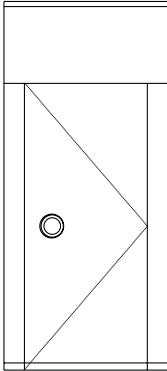


OPTIONS SPECIFICATIONS

Pass Doors for Use with 630 & 640 Series Partitions



Single U-Shaped Pass Door Shown

PRODUCT OVERVIEW:

Pass doors are available on all models of operable partitions and are of similar construction, thickness, and finish as the basic panels.

Pass doors meet ADA requirements:

- A minimum 32" [813] clear opening with the door open 90 degrees.
- No more than 5 lbs. [2.3 kg] of force for pushing or pulling open.
- Handles and pulls require no tight grasping, tight pinching, or twisting of the wrist to operate.
- Hufcor pass doors used with operable partitions do not require a threshold.

1.06. WARRANTY

Hufcor pass doors shall carry the same warranty as the partitions in which they are installed.

PART 2 - PRODUCTS

2.02 MATERIALS

- A. Product to be pass door(s) as manufactured by Hufcor Inc.
1. The pass door shall be the same thickness and construction as the basic panels.
 - a. The pass door frame is mounted in the U or L panel and shall be of the same construction and material as the basic panels.
 - b. Panel frame system must have steel header truss and support legs with maximum 1/16" [[1.5mm] horizontal deflection in door openings up to 8'0" [2438].
 - c. No threshold shall be required.
 - d. Standard single U or L-shaped doors are 3'0" x 7'0" [914 x 2134].
 - (1) Optional standard door size is 3'0" x 6'8" [914 x 2032].
 - (2) Optional custom sizes available: 3'0" x 6'5" [914 x 1956] and 3'0" x 8'0" [914 x 2438]
 - e. Hinges shall be of 1/2" [13] profile, 1/8" [3] thick steel. There shall be a minimum of three hinges per door spaced to provide optimum support.
 - f. Pass door leaf has perimeter trim to protect face finish and to provide visual identification as required by International Building Code.
 - g. Pass door panel legs used with paired or omni-directional panels require bottom seals that provide 100 lbs. constant downward force to maintain stability while panels are in the opening.
 - h. Pass doors used in continuously hinged partitions have fixed, continuous contact bottom seals.
 - i. Pass door leaf used with paired or omni-directional panels, incorporates a field adjustable, self-compensating retractable bottom seal providing sound control when door is closed.
 - j. Pass door leaf used in continuously hinged partitions have fixed, continuous contact bottom seals.
 - k. All screw heads and fasteners shall be concealed.
 - l. Pass door must contain positive latching mechanism. The positive door latch is ADA compliant and shall consist of a push/pull mechanism requiring no more than 5 lbs. [2.3 kg] of operating force. Operating mechanism shall require no tight grasping, tight pinching or twisting of the wrist to operate.
- B. Weight of the pass door leaf shall be 140 lbs. [[63 kg].

C. Finishes

1. Pass door panel and pass door finish shall be factory applied and match basic panels.
2. Metal frames, hardware, trim, and seal channel color shall be the same as the basic panels.

D. Available Accessories/Options.

1. Exit signs:
 - (a) Face-applied reflective face (check with local code for requirements).
 - (b) Recessed self-illuminated (check with local code for requirements). [Note: Space is required above the pass door for installation of exit sign. This dimension varies by panel height. Contact your Hufcor representative for specific dimensions.]
2. Key lock
3. Automatic door closer
4. Prepped for window - includes frame and cutout
5. Peep hole

2.03 OPERATION

- A. Pairs and omni-directional (individual panels):
1. The retractable seals on the pass door panel shall be operated in the same manner as the basic panels.
 2. The pass door leaf has a self-adjusting retractable bottom seal that is activated by a concealed lever located in the panel astragal.
- B. Continuously Hinged Electric Models:
1. The bottom seals of the pass door panel and pass door shall be fixed, continuous contact.

PART 3 - EXECUTION

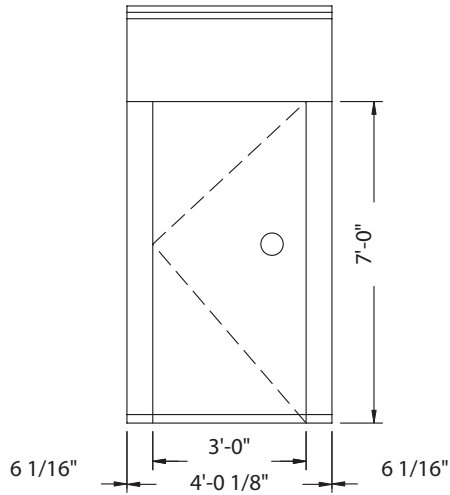
A. Installation

The pass doors will be installed in the operable wall system by an authorized factory-trained installer and be in strict accordance with the approved shop drawings and manufacturer's standard printed specifications, instructions, and recommendations.



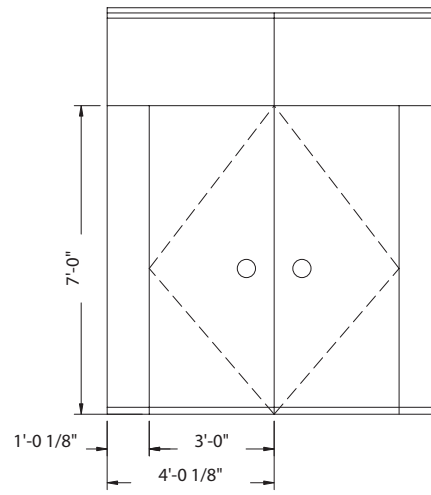
“U”-Shaped Pass Door

Shown Standard 3'0" x 7'0" [[914 x 2132]]
Also available Standard 3'0" x 6'8" [2032]

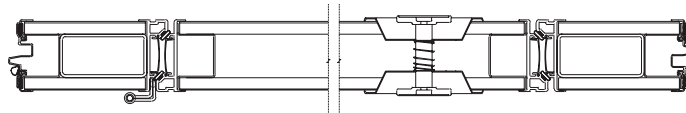


“L”-Shaped Double (Batwing) Pass Doors

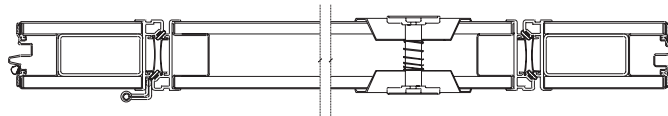
Shown Standard 3'0" x 7'0" [[914 x 2132]]
Also available Standard 3'0" x 6'8" [2032]



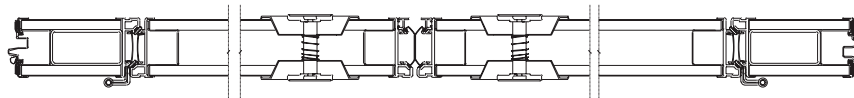
U-Shaped Single Door - Vertical Trim on Panel



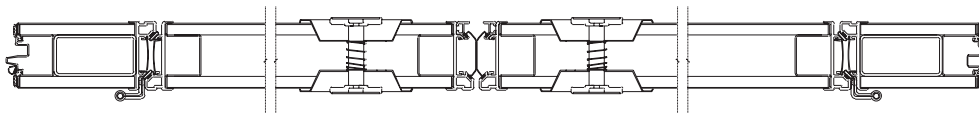
U-Shaped Single Door - NO Vertical Trim on Panel



“L”-Shaped Double Doors (batwing), Vertical Trim on Panel



“L”-Shaped Double Doors (batwing), No Vertical Trim on Panel



The manufacturer reserves the right to improve and change product without notice.

Worldwide headquarters:

Hufcor Inc.
P.O. Box 591
Janesville, WI USA 53547
1-800-542-2371 ext. 214; 1-608-756-1241
FAX: 1-608-758-8253
E-mail: info@hufcor.com
Internet address: www.hufcor.com

Select Hufcor products are also manufactured in the U.S. at:
Hufcor/Airwall, Inc., 8739 E. Artesia Blvd., Bellflower, CA 90707
1-562-634-3116 FAX 1-562-630-8203,