



World Leader in Flexible Space Management



TACTICAL TRAINING MOVEABLE WALL SYSTEMS

HUFCOR FLEXTACT[®]

MOVING SITUATIONAL TRAINING FORWARD

HUFCOR[®]

MOVEABLE WALLS

FlexTact[®] Improves On A Good Idea

Situational training facilities are found throughout North America. Many facilities offer separate buildings or a permanent, concrete maze to provide situational training scenarios. Some systems use demountable wall panels to change room layouts. Can your department afford to own multiple buildings to provide different training scenarios for your staff locally? Do you have the extra staff that it takes to rearrange demountable panels, which often can take 4 – 8 hours to reconfigure a single room? Do you want to provide more than one layout offered from a permanent maze system, which doesn't offer any flexibility to change the scenarios for optimal training?

The Hufcor FlexTact system is designed to provide scenarios of multiple building layouts in a single facility. The system uses specially designed operable wall panels hung from an overhead tracking system.

Hufcor's FlexTact design maximizes the flexibility of the training center by using time-tested overhead partition track and trolley systems to move the panels into place. The system allows room changes to be completed in minutes. Unlike fixed wall training centers, Hufcor moveable wall centers provide unlimited floor to ceiling room configurations increasing a trainer's effectiveness to provide SWAT, MOUT, first responder, active shooter and defensive tactics scenario based training.



"I have been able to set up as many as four different training scenarios in a day. The FlexTact system far exceeded our expectations."

– Lieutenant Matthew Enyeart, Regional Training Academy of Northwest Indiana

FOR MORE INFORMATION GO TO www.HufcorTacticalTraining.com



SAFETY AND SUCCESS

THE **SAFETY** AND **SUCCESS** OF YOUR STAFF DEPENDS ON THE PREPARATION AND TRAINING PRIOR TO MEETING WITH UNSUSPECTED, DANGEROUS FIELD SITUATIONS. THE MORE EXPERIENCES YOU CAN DUPLICATE DURING TRAINING SESSIONS, THE BETTER PREPARED YOU WILL BE WHEN FACED WITH ACTIVE SHOOTERS AND NEW THREATS. YET, SITUATION TRAINING CAN BE EXPENSIVE, ESPECIALLY WHEN YOU NEED TO SEND STAFF TO SCHOOLS OFF SITE, JUST TO ENSURE THEY RECEIVE DIFFERENT TRAINING SCENARIOS.

NOW, HUF COR INC, THE MOST USED BRAND OF OPERABLE PARTITIONING SYSTEMS, OFFERS FLEXTACT® SITUATIONAL TRAINING SYSTEMS, A NEW AND AFFORDABLE WAY TO DESIGN YOUR OWN MULTI-PURPOSE SITUATIONAL TRAINING CENTER INTO A NEW BUILDING OR RETROFITTED INTO AN EXISTING FACILITY.

“The FlexTact moveable wall system helps to create real life scenarios by simply resetting the panels. Recruits and staff get enhanced training over simulators by using the reconfigurable walls that must be navigated during the tactical exercises. FlexTact wall systems come as close to reality as any situational training I have experienced and trained in.”

– Training Officer/PFC Keith Holmes, Ft. Pierce, FL PD

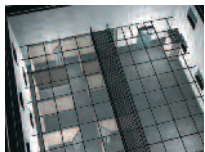
FOR MORE INFORMATION GO TO www.HufcorTacticalTraining.com



HOTEL



RESIDENCE



OFFICE

Increases The Number Of Situations Per Training Session

The FlexTact panels move nearly effortlessly into place allowing for multiple scenarios to be set up. Your classic residential layout can be changed to a retail storefront by afternoon. Then by morning, tactical trainees work with a hotel floor layout and quickly transition to an office scenario. At a fraction of the cost, your trainees receive situational training in a fraction of the time it would take to complete at off-site, fixed-walled facilities. With video monitoring and surveillance cameras, trainees can immediately review performance while the system is being reconfigured. Multiple story training centers are also designed to provide the ultimate flexibility.

Train with FlexTact: SWAT and Clearing Exercises

- Center Door Entry
- Corner Fed Room – Short Wall Right or Left
- Continuous Flood Tactic with Adjoining Rooms
- Linear Entry Tactics with Multiple Room Layouts
- Leap Frog Closed and Open Door Tactics
- Saturation Flood Tactics from Hallway
- On Line Flood Tactics
- Power Flood Tactics
- Simultaneous Room Entry
- Hallways Clearing L & T Shape
- Stairwell Tactics
- Active Shooter – Unlimited scenes
- ALERRT® – Active Shooter programs
- Close Quarter Combat/Krav Maga Fighting
- Cell Extractions

Provides Different Types Of Training In The Same Building Structure

The overhead tracking system can carry doors, window panels, jail fronts, glass wall panels and more that allow different building scenes to be replicated. The panels also are manufactured with rugged MDF surfaces and high pressure laminate faces that withstand impacts. The laminate faces provide effective training surfaces for crime scene investigation training – finger printing, blood splattering, etc. From jail extraction exercises to hostage situations, the panels provide the durability you need to hold up to the rigors of all sorts of training exercises.

Low Light Training

Nearly 80% of actual SWAT and active shooter situations are conducted in low or no light scenarios. The FlexTact systems can be designed to coordinate with zoned overhead lighting to create the scenarios you need to practice in the dark.

Feedback is Essential for Retention

Optional catwalks and video monitoring systems provide unmatched overhead observation allowing trainers to supervise without being among the trainees. Trainers have raved about how beneficial these catwalks are in allowing them to bark instructions and to immediately review mistakes trainees make during training sessions. Moreover, the catwalks allow trainees to observe their peers' sessions and learn from these experiences so trainees have no down time.

Leasing Programs Available

Hufcor offers a unique lease program for the FlexTact system. Your system can be designed, installed and leased-to-own, reducing your startup capital. For municipalities, this allows you to potentially "expense" the training facility, instead of requiring major capital outlays.

Hufcor also offers the FlexTact wall system as part of pre-engineered buildings offered from Morton Buildings. For more details visit,
www.morton-hufcor-tactical.com



MORTON BUILDINGS, INC.



Panel Construction is Key to Durability

Hufcor's panel construction is specifically designed for the wear and tear of high impact training.

- **RETRACTABLE BOTTOM SEALS**

The bottom retractable seal systems provide 100 lbs. of downward seal force, securing the panel in place without the need for floor pins. When retracted, the panels move smoothly into place without friction at the floor. The floors remain obstacle-free with Hufcor's bottom seal system, so tripping hazards are eliminated.

- **EDGE TRIM**

Hufcor's edge trim protects the panels from damage caused by repeated contact with trainees and bulky equipment used by both tactical and fire rescue trainees.

- **SIDE SEALS**

The side seals provide enough clearance to allow panels to pass by at the intersections.

- **STEEL FRAMES**

Durable, rugged, welded steel frames resist impacts during exercises.

- **HIGH PRESSURE LAMINATE SURFACES**

Withstands impacts from simunitions, compressed air and paintball rounds. Simply wipe down simunitions markers after an exercise. And, if necessary, the faces are replaceable.

- **CUSTOM TRACK GRID LAYOUTS**

The Hufcor FlexTact overhead tracking system is customized to your room sizes and training needs. The standard grid is a 4' x 4' area, but others have been designed with 8' grids and special angles to fit to existing building designs. As such, FlexTact can be retrofitted into almost any building with ample overhead support structure.

- **OPTIONAL PASS DOOR SYSTEMS**

Breachable Pass Door System: Pass doors are designed to mimic both commercial and residential style entrances. High pressure gas springs stabilize the door systems. Durable, custom designed roller latching systems and 18 ga. reinforced face steel allow for doors to be breached with rams, human force or shot gun simunitions. In addition, multiple hinging directions are offered to help trainees recognize and train the proper entrance techniques.

- **OPTIONAL WINDOW PANELS**

Flangible windows can be inserted into the FlexTact panels to provide conditions found in commercial buildings and residences and to rehearse "break & rake" entry and distractions. The window frames are durable architectural grade aluminum and are reinforced so trainees can enter through the window systems.

- **OPTIONAL MARKER BOARDS**

Marker boards or chalkboards can be added to FlexTact panels that can be configured into a classroom for optimal use of the training space.

- **REPOSITIONABLE GRAPHICS**

Hufcor offers a complete line of scenarios that allow trainers to set up a room and add full height wall graphics to create realistic environments.

- **FLEXTACT MT™**

Hufcor's FlexTact MT™ is a military version with beefed up seal systems, reinforced frames and thicker, more rugged MDF faces for the extreme durability necessary for continual military training.



PANEL CONSTRUCTION

FOR MORE INFORMATION GO TO www.HufcorTacticalTraining.com

FLEX TACT & FIRE TRAINING

Fire Safety Training

In addition to peace officer training exercises, Hufcor FlexTact is used by fire and rescue departments to conduct search and rescue trainings. Firefighters can train using hoods to create complete darkness and must learn how to find and extract victims in ever-changing room configurations. With the endless setup options, firefighters are challenged to find their way to and back out of a scenario.

The built-in durability of the Hufcor FlexTact moveable wall systems withstands the impacts from heavy fire rescue equipment. Repetitive training sessions increase these rescue skills lowering risks during real situations.

“Hufcor’s FlexTact system improves our firefighter search and rescue training sessions tenfold by allowing quick and easy configurations. Trainees can no longer memorize their rescue routes, every exercise is different.”

– Ron Privett, Assistant Chief, Fort Wayne Fire Department and Staff Trainer

The Public Safety Academy of Northeast Indiana was designed by Schenkel Shultz Architecture, Fort Wayne, IN
www.schenkelshultz.com

HUF COR CAN PROVIDE A COMPLETE LINE OF ACCESSORIES THAT ENHANCE TRAINING WITHIN FLEXTACT SYSTEMS:

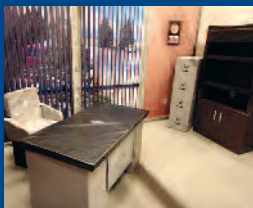


Before



After

Repositionable Graphics



Nottaline®
Foam Furniture



Targets



40 Hour Training Program

The Hufcor FlexTact® systems are represented globally by Action Target, a leader in live fire shooting ranges, targets and supplies.

VISIT WWW.ACTIONTARGET.COM.



HUF COR OFFERS the widest variety of space division products from a single source. In addition to operable partitions, call us for glass operable walls and accordion doors. We specialize in custom engineering products when “standard” won’t do for your needs. Contact your Hufcor representative or visit our website to learn more about how Hufcor can help solve your space division problems.

FOUNDED 1900



World Leader in Flexible Space Management™

WORLDWIDE HEADQUARTERS

PO Box 591 / 2101 Kennedy Road, Janesville, WI 53547
Toll-Free: 800-542-2371, ext. 214 Telephone: 608-756-1241
Fax: 608-758-8253 E-mail: info@hufcor.com
www.hufcor.com OR www.hufcortacticaltraining.com

WWW.HUF COR.COM Visit Hufcor’s website for our latest product innovations. The site also includes CAD details and specifications that can be downloaded and an extensive photo album.

WORLDWIDE DISTRIBUTION Hufcor products are available from local distributors throughout the world. Visit our website for the name of your nearest representative.



*USGBC and related logo is a trademark owned by the U.S. Green Building Council and is used by permission.