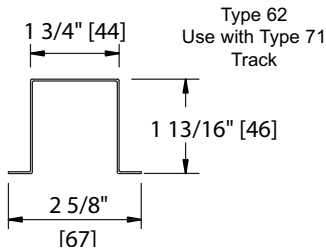
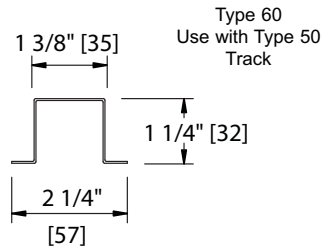


## OPTIONS & ACCESSORIES

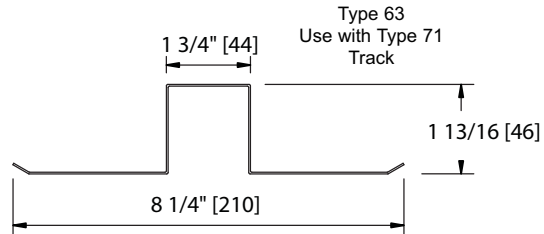
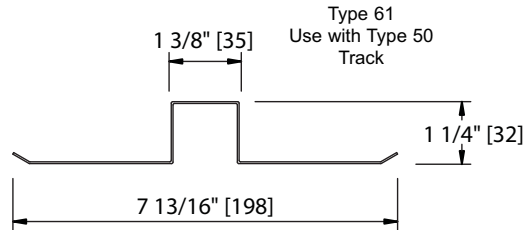
Hufcor offers a selection of standard options to optimize the versatility of our laminated accordion doors. Many "standard" products may be modified to meet a specific design need. Contact your Hufcor Distributor for the options you require or for design assistance.

**TRACK CHANNEL** - Track channel is recommended for use with our Types 50 or 71 recessed track. Channel provides smooth, straight ceiling lines; and aids subsequent track installation. The wide flanged channel protects the ceiling from rub marks that may be caused by the top sweepstrips moving across the ceiling tile. Track channel is made of steel and primed off white for field finishing.

### Narrow Flange Channel

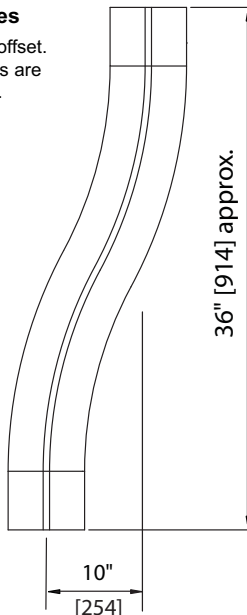


### Wide Flange Channel



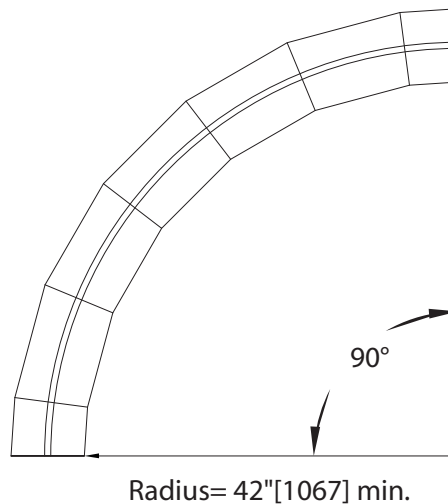
**CURVED TRACKS** - Curved tracks are available in Types 15, 50, and 71 track. Stock curves have a radius of 3'6" [1067] and 5'0" [1524]. Custom curves are manufactured to specification. No structural modifications are required.

**"S" Curves**  
Standard 10" offset.  
Custom curves are  
also available.



### RADIUS CURVE

Type 15 (shown) is segmented.  
Types 50 & 71 tracks are curved,  
not segmented.

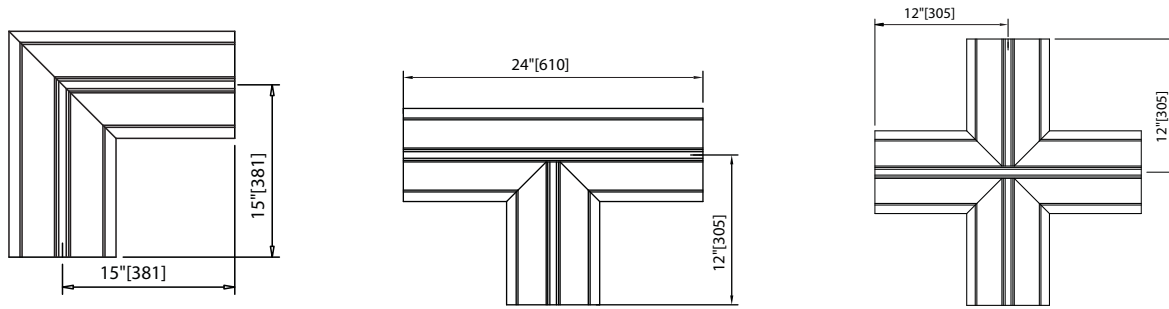


Curved installations require extra door fullness. Add to the partition width as follows:

Radius	Add
3'6" [1067]	7'0" [2132]
5'0" [1524]	10'0" [3050]

# DETAILS - NOT TO SCALE

**INTERSECTIONS** - L, T, and X's are used for intersecting partitions. The drawings below are for Type 15 track, however, L, T, and X are available for Types 50, 71, 15 & 18 tracks. L, T, and X shaped channel is also available for Type 50 or 71 tracks.

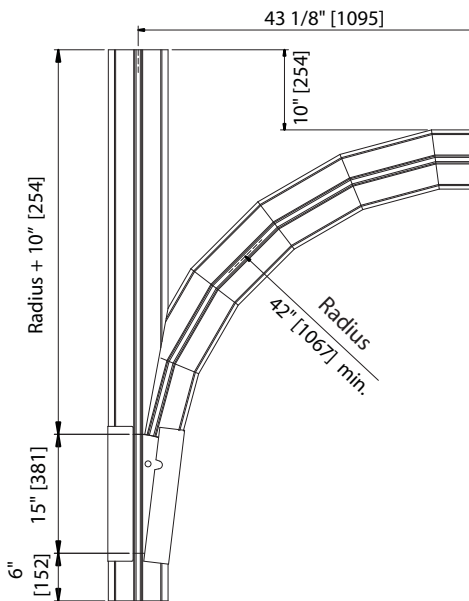


**SWITCHES** - Switches are available for all models. They allow a partition to be moved to another location or intersect with another door.

**GLIDE SWITCH** - branches a partition from straight track onto curved track so that the partition can be used in an alternate track, at right angles to the main run, or be stacked parallel to the wall.

**Glide Switch**

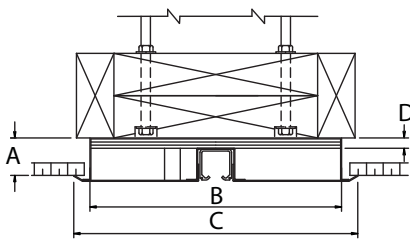
shown with optional curve. Curve is a separate option. See Page 1.



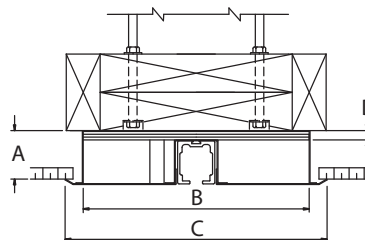
**Glide Switch Framing Details \***

	Type 50 Track	Type 71 Track	Type 15 Track
A	1-3/4" [44]	2-3/8" [60]	2" [51]
B	10-1/4" x 20-1/4" [260 x 514]	10-1/4" x 20-1/4" [260 x 514]	10" x 20" [254 x 508]
C	11-3/4" x 22" [298 x 558]	12-1/8" x 22" [308 x 558]	7-1/2" x 15" [190 x 381]
D	9/16" [14]	9/16" [14]	9/16" [14]

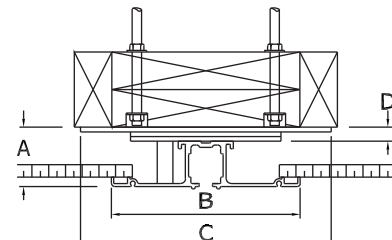
\* Dimensions for Types 50 & 71 include pan. Types 15 & 18 do not require a pan.



Glide Switch with Type 50 Track

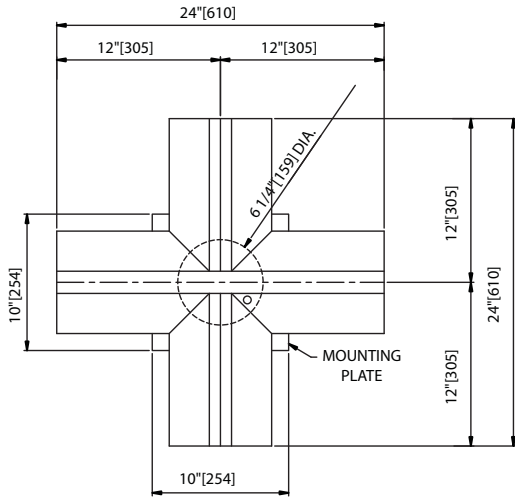


Glide Switch with Type 71 Track



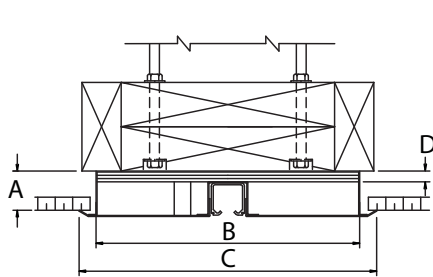
Glide Switch with Type 15 Track

**CROSSOVER SWITCH** - Permits partitions to pass through intersections.

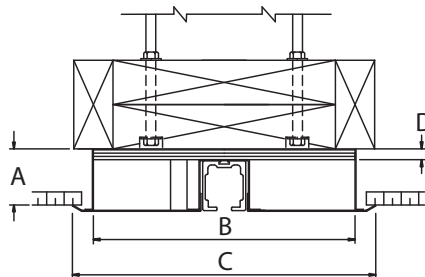


**Crossover Switch Framing Details**

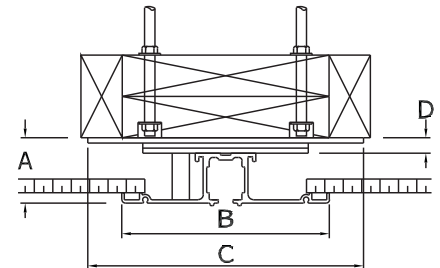
	Type 50 Track	Type 71 Track	Type 15 Track
A	1-13/16" [46]	2-5/16" [59]	2-3/16" [56]
B	10-1/4" x 10-1/4" [260 x 260]	10-1/4" x 10-1/4" [260 x 260]	10" x 10" [254 x 254]
C	11-1/2" x 11-1/2" [292 x 292]	11-1/2" x 11-1/2" [292 x 292]	7-1/2" x 7-1/2" [190 x 190]
D	3/4" [19]	3/4" [19]	3/4" [19]



Crossover Switch with Type 50 Track

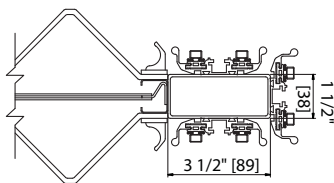


Crossover Switch with Type 71 Track

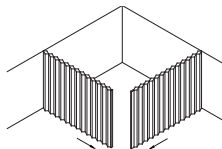


Crossover Switch with Type 15 Track

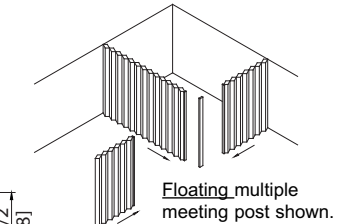
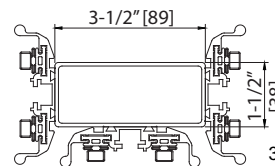
**POSTS** **MULTIPLE MEETING POSTS** are available to connect two, three, or four doors. The post may be attached to one door (attached) or left unattached (floating). The post is suspended from a nylon-tired steel ball bearing carrier.



4-way Meeting Post - attached to one door.



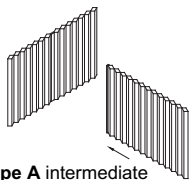
Attached multiple meeting post shown.



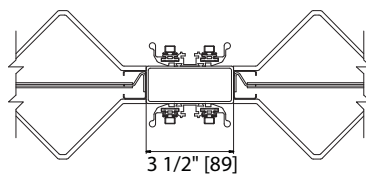
Floating multiple meeting post shown.

3-way Meeting Post - floating (not attached to door).

**INTERMEDIATE POSTS**

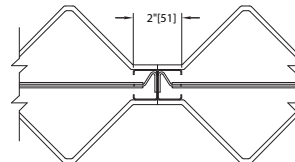


Type A intermediate post shown.



Type A

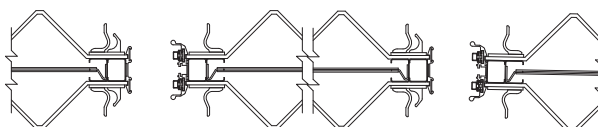
Intermediate post enables 2, 3, 4 doors to intersect. Available one or both sides.



Type B

Intermediate post connects narrower sections of doors for easier installation.

**MALE/FEMALE POSTS** Enables multiple doors to be latched together to fill wider openings.



Lead Post

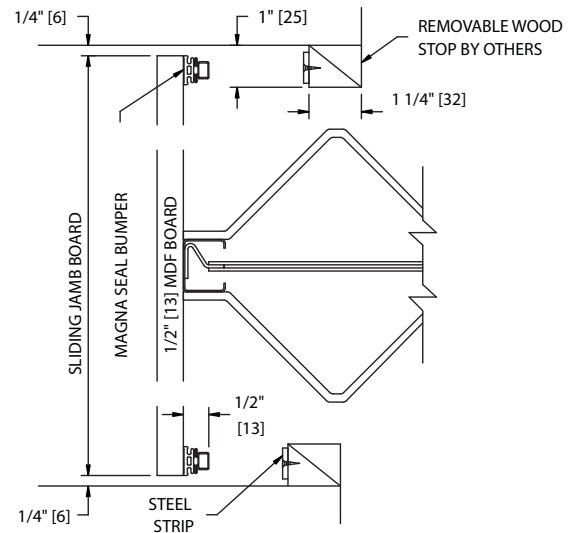
MagnaSeal Jamb

Lead Post

MagnaSeal Jamb

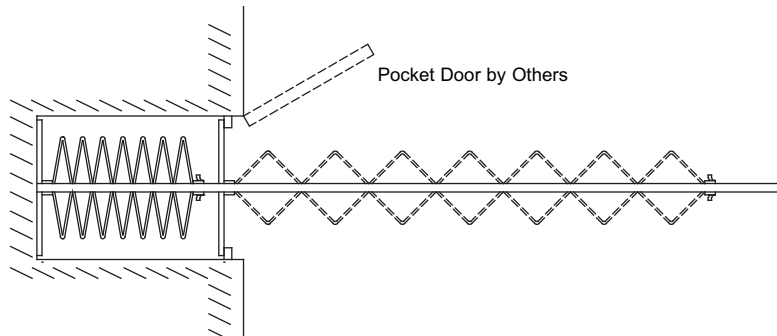
### Sliding Jamb Board

The sliding jamb board allows the door to be stacked in a pocket. When the door is in use, it slides forward to the pocket opening. It is not attached to the wall at the anchor end. The sliding jamb board saves money. The owner does not need to buy a door that goes to the back of the pocket. We suggest that an access door be built into the side of the pocket, if possible. This allows space for installation of track and access if service is ever needed.



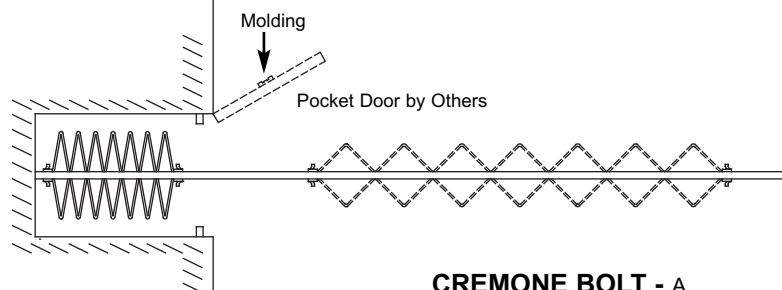
### Pocket Storage with Sliding Jamb Board.

Partition stores in pocket. When extended, sliding jamb board moves against stops at front of pocket.



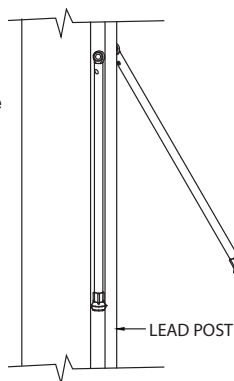
### Pocket Storage with Rolling Jamb.

Partition stores in pocket. When extended, pocket door is closed and partition latches to molding mounted on outside of pocket door.



### PENDANT PULLS

are a pair of swiveled handles mounted on the lead post. They are used to help pull large partitions across the opening. Pendant pulls are recommended for partitions over 10' [305m] in height.

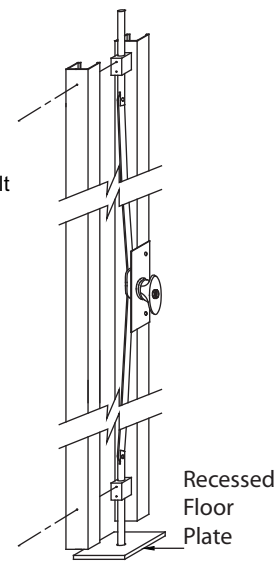
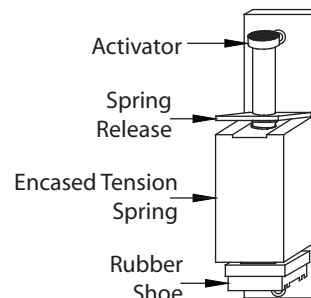


### FOOTBOLT -

A footbolt is similar to a cremone bolt - it holds a door in place when it does not extend from wall-to-wall. It is less expensive than a cremone, however, it holds the doors at the bottom only - not at the top.

### CREMONE BOLT - A

cremone bolt holds the door in place when it does not extend from wall-to-wall or if the door intersects with another partition. Turning the handle extends a bolt into the track and floor plate.



### World headquarters:

Hufcor Inc.  
P.O. Box 5591  
Janesville, WI USA 53547  
1-800-542-2371 ext. 395; 1-608-756-1241  
FAX: 1-608-758-8253  
E-mail: info@hufcor.com  
website: www.hufcor.com

The manufacturer reserves the right to improve and change product without notice.